

REPLACING THE COIN BATTERY IN T200 TABLETS

This procedure applies **ONLY** to tablets that have the battery upgrade installed by TabletKiosk. The upgrade is indicated by the **BATTERY INSIDE** label on the cover of the battery compartment. The replacement battery should be ordered by e-mailing to support@intelliqualter.com.

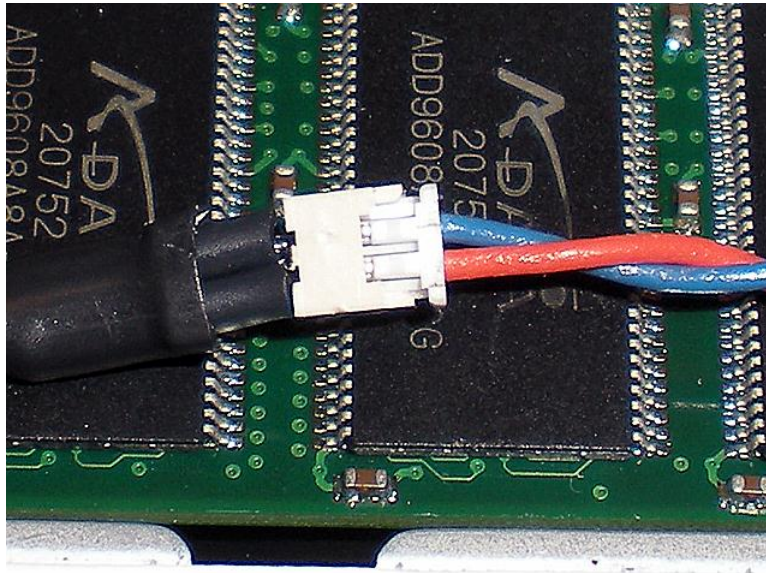
Place the tablet on the desk horizontally, with the battery compartment toward you. Remove the two screws circled on the picture and lift the lid.



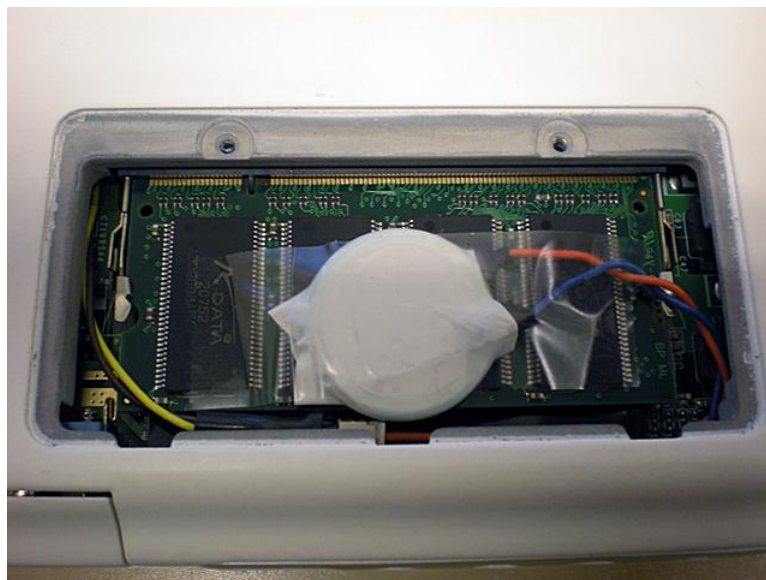
Lift the cable from below the memory card and unplug the battery connector.



Plug in the new battery as the picture shows.



Tape the battery to the top of the memory card. Push the connector inside. Remount the lid with the screws.



After the battery replacement the tablet comes up with the configuration error message. Push in the snapshot button to continue booting.

Go to System->Interface Setup/Test and set the date and time.